

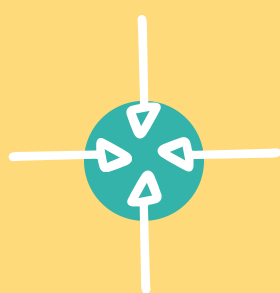
CONSIDERATIONS FOR ADAPTING YOUR FALL RE/YM PROGRAMS



If your program serves more than one location . . .

Consider this:

Restrictions on occupancy and other safety measures would be based on each physical facility, not on the program as a whole.



If you don't have enough physical space to accommodate social distancing in the classroom(s) . . .

Consider this:

Adjusting to a flipped classroom scenario, meeting with every student once/twice per month. Dividing out classrooms. Outdoor class (drive-in style).



If you share space with the school . . .

Consider this:

Communication, collaboration with school leadership essential! Form a team to decide which/how facility sanitization will be needed and accomplished satisfactory to all parties.



If recruiting qualified catechists is a challenge . . .

Consider this:

You might try sending asynchronous material (materials that can be done at any given time) home, then have catechists attend fewer, in-person opportunities as possible. Can Zoom or other platform be used for larger group virtual gatherings? How about sending materials via Facebook or parish newsletter.



If you sense a lack of support from your pastor or the parish staff . . .

Consider this:

Identify specifically how support is lacking and have a clear conversation with Pastor about it. Be ready to suggest concrete action items that would be helpful. Reach out to the Diocese for assistance.



If you're expecting a new pastor this summer . . .

Consider this:

Most incoming pastors will not be anxious to make any huge, dramatic changes right away. Have a clear description of your program ready to present, your vision for the future. Good communication and flexibility are key!



Diocese of
Green Bay



Office of Child &
Youth
Faith Formation

MORE CONSIDERATIONS . . .



If your program has budget shortfalls . . .

Consider this:

There are only two solutions: lower expectations (what CAN you do with limited funds), or increase fundraising (within parish/diocesan rules). Suggestion: Establish a "wish-list" for specific needs, advertize in bulletin, facebook, parish newsletter, etc.



If your work hours have been cut . . .

Consider this:

Maintain healthy boundaries. Accomplish what is feasible and leave the rest in God's hands. We're not called to feed the 5,000; only to offer the fish and loaves we have.



If your families don't have reliable internet service . . .

Consider this:

Utilize asynchronous materials. Possibly check with local school to see what its plan is to utilize technology (wi-fi hot spots, tablets, etc). Some public libraries have expanded their wi-fi. Perhaps the parish offer its wi-fi for families to come, download lessons.



If parents are not engaging in the faith formation program . . .

Consider this:

Persistence is crucial, especially in those initial relationships with parents. Meet them where they are in faith and remember that their obligation isn't necessarily completing all the lesson material, rather it is the spiritual well-being of their children. Encourage families to work together, especially if they have kids in the same grade.



If your lesson plans are based entirely on textbooks . . .

Consider this:

Arrange to send assignments home every week in the form of a packet. You might compose a reflection or some written assignment. Sadly this allows for little to no interaction with student. Find videos on You Tube or family activities to enliven the material. Expect lower level of engagement with this model.

Trust in the Lord with all your heart, and lean on not your own understanding. In all your ways, acknowledge Him, and He shall direct your paths.

Psalm 3:5-6 NKJV